



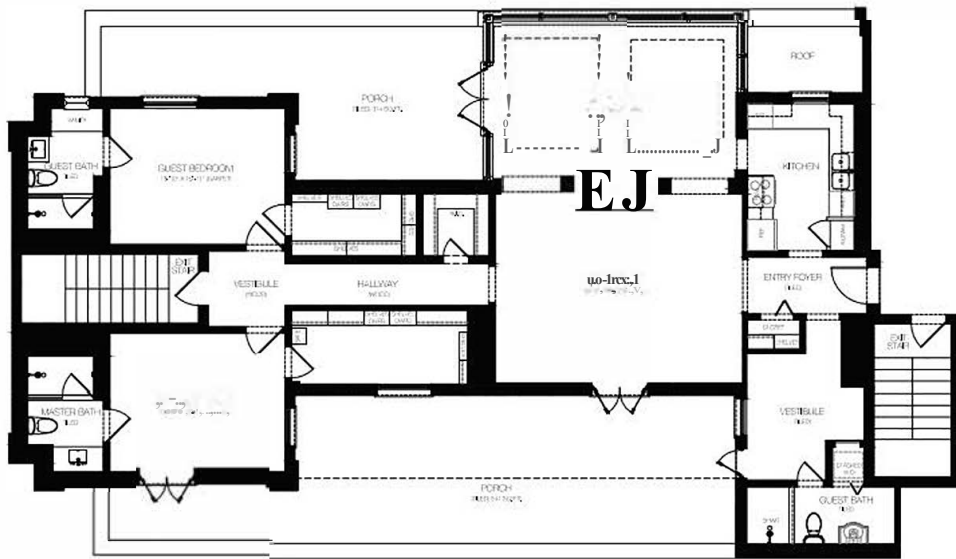
HAMM&N AVENUE



PRESIDENTIAL PENTHOUSE 1939 SQUARE FEET

1/4" = 1'-0"

PORCH 468 SO. FT.



HAMMON AVENUE



DUKE OF WINDSOR PENTHOUSE 1964 SQUARE FEET

SCALE: 1/8" = 1'-0"

PORCH 855 SO. FT.